

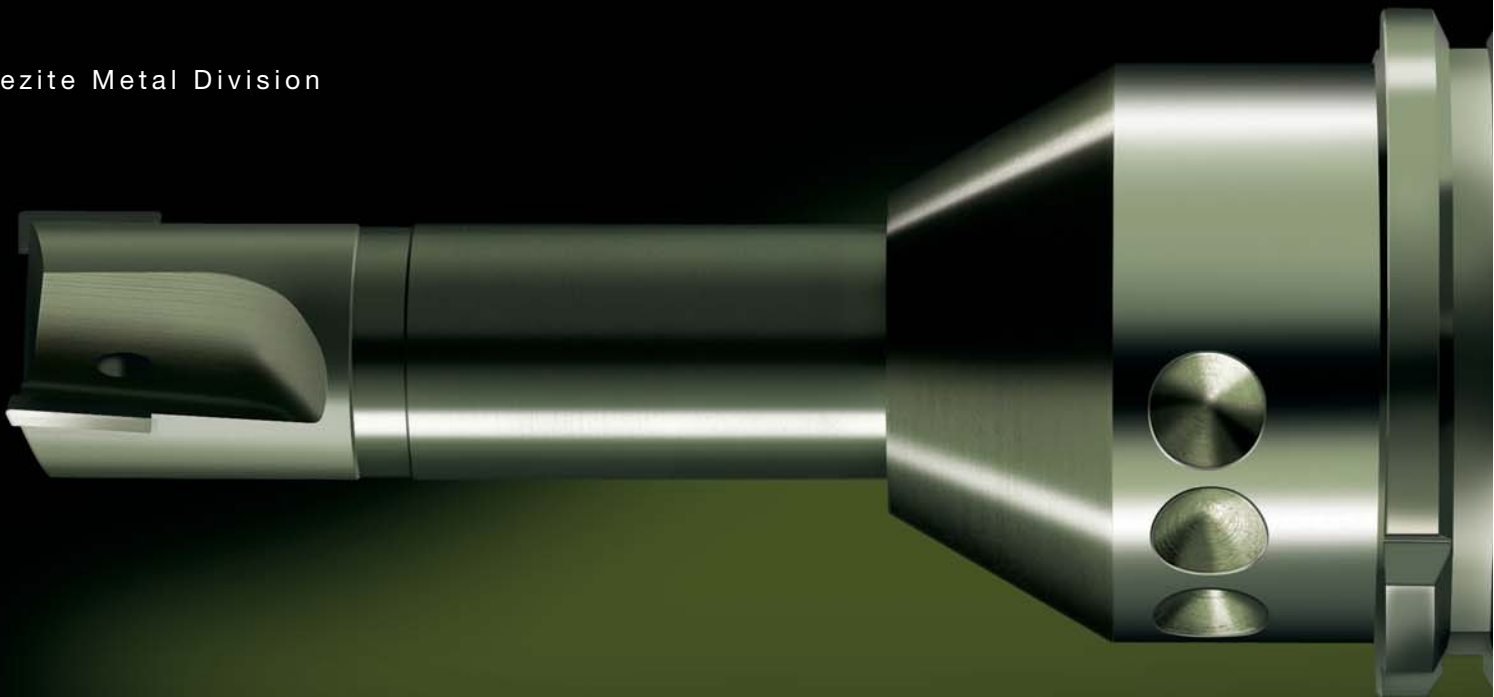


FREZITE®



AEROSPACE

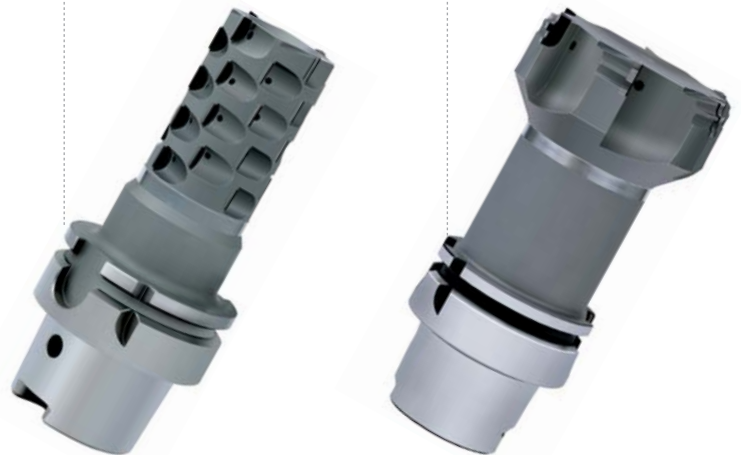
Frezite Metal Division



AEROSPACE



Frezite Metal Division



Aerospace components, manufactured in Aluminium and Titanium, are very often thin walled parts making PCD (polycrystalline diamond) the ideal cutting material for reducing cutting forces.

Being able to withstand high cutting speeds, reduction in cutting forces are down to a minimum, giving minimal wear along with long tool life as an added bonus.

MMC (metal matrix composite) materials have many properties that are superior to those of pure metal or ceramic materials.

MMC components made of Aluminium, reinforced with SiC particles, was developed originally for the aerospace and defence industries.

It has been shown that satisfactory machining results on these hard and abrasive workpiece materials, in terms of both quality and economics, can be achieved only with the use of PCD tools.

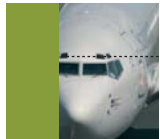


Photo Copyright © Tomás Coelho



Milling and Drilling Operations in aerospace components:

- Light alloys
- Al Si Alloys
- Titanium alloys
- Fibre composites
- Fibre composite/metal stacks
- Stainless steels
- Nickel alloys

Complete tooling solutions for all aerospace segments:
 Airframe;
 Engines components (shafts, blisks, blades and casings)
 Aero structure



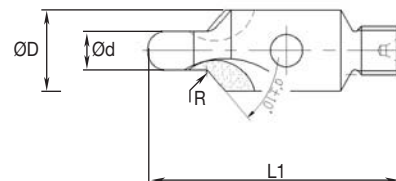
Photo Copyright © Jan Jorgensen



Photo Copyright © Alexander Kroychik

Art. 9191 PCD COUNTERSINK CUTTER

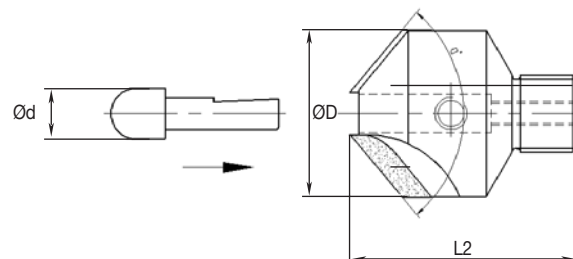
Product details:
- PCD 2 flutes countersink cutter



Art. N°	ØD+/-0.1	Ød+0/-0.02	L1+/-0.2	L2+/-0.2	a+/-10	R+/-0.1
9191.0001	10	3,15	29,6	24,13	100	0,6
9191.0002	10	3,937	30,86	24,13	100	0,38
9191.0003	10	4,737	31,24	24,13	100	0,89
9191.0004	14	6,325	37,9	27,94	100	1,14
9191.0005	17	7,912	38,1	27,94	100	1,14
9191.0006	10	5	33	24,13	100	0,7
9191.0007	10	4,8	31,5	24,13	100	0,5

Art. 9192 PCD COUNTERSINK CUTTER WITH INDEXABLE PILOT

Product details:
- PCD 2 flutes countersink cutter
with indexable pilot



Art. N°	ØD+/-0.1	Ød+0/-0.02	L1+/-0.2	L2+/-0.2	a+/-10	R+/-0.1
9192.0001	10	3,15	29,6	24,13	100	0,6
9192.0002	10	3,937	30,86	24,13	100	0,38
9192.0003	10	4,737	31,24	24,13	100	0,89
9192.0004	14	6,325	37,9	27,94	100	1,14
9192.0005	17	7,912	38,1	27,94	100	1,14
9192.0006	10	5	33	24,13	100	0,7
9192.0007	10	4,8	31,5	24,13	100	0,5