

# 2

# ZENTRA

2

Kranzspannfutter / Lever scroll chucks

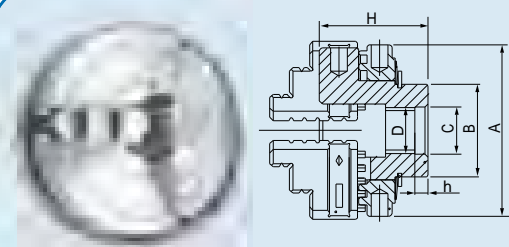


**Kranzspannfutter**  
*Lever scroll chucks*

**Drehfutter**  
mit großer Bohrung  
*Scroll chucks*  
*with extra large thru-hole*


**5C-Spannzangenfutter**  
*5C collet chucks*

## Kranzspannfutter Lever scroll chucks



3

Zyl.



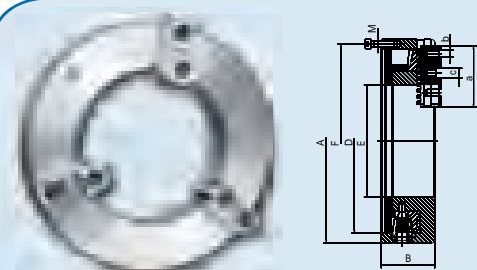
Stahl  
Steel

Backen | Jaws

Ø mm	A mm	B mm	C mm	G mm	H mm	RPM <sub>MAX</sub> min <sup>-1</sup>	Spannkraft Gripping force	kg	Art.-Nr./ Order no	EUR
80	80	48	24	M6 x 3	52	7500	9000 N	1,2	BK-K635Z-080	


Inkl. 1 Satz harter Umkehrbacken, Spannschlüssel, Befestigungsschrauben.  
Incl. 1 set of hard solid reversible jaws, key, fixing screws.

## 3-Backen-Drehfutter mit großer Bohrung 3-jaw lathe chucks with extra large thru-hole



3

Zyl.



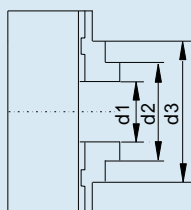
Stahl  
Steel

Backen | Jaws

Ø mm	E mm	B mm	F mm	D mm	a mm	M mm	b mm	c mm	RPM <sub>MAX</sub> min <sup>-1</sup>	Art.-Nr./ Order no	EUR
400	220	105	381	362	120	40xM12	5/8"-11	19,0	650	● BK-3595-400	
508	320	120	481,5	462	120	40xM16	3/4"-10	19,0	460	● BK-3595-508	
660	406	135	620	580	127	40xM16	3/4"-10	19,0	325	● BK-3595-660	
800	410	151	460	700	225	160xM24	3/4"-10	19,0	260	○ BK-3595-800	

Inkl. je 1 Satz gehärteter Grund- und Umkehraufsatzbacken, Spannschlüssel, Befestigungsschrauben.  
Incl. 1 set each of hardened base jaws and reversible top jaws.

### Spannbereich / Clamping range



Ø mm	d1 mm		d2 mm		d3 mm	
	Min.	Max.	Min.	Max.	Min.	Max.
400	130	270	230	350	300	400
508	250	380	330	450	385	500
660	376	470	455	575	515	635
800	260	566	360	750	420	800



